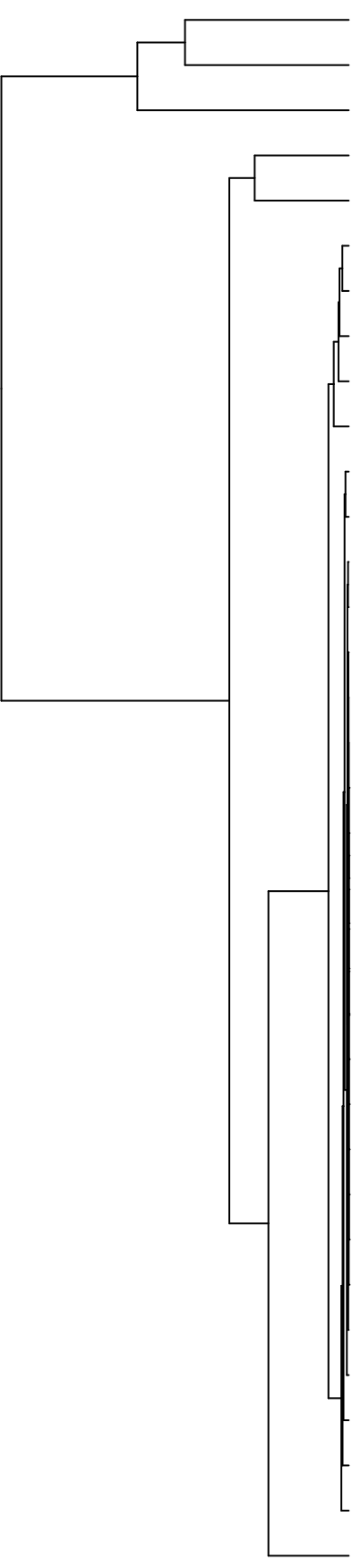


Group006

- A Final -PMA
- F Final -PMA



- Veillonellaceae
- Pasteurellaceae
- Streptococcaceae
- Neisseriaceae
- Fusobacteriaceae
- Actinomycetaceae
- Leptotrichiaceae
- Prevotellaceae
- Campylobacteraceae
- Carnobacteriaceae
- Gemellaceae
- Micrococcaceae
- Erysipelotrichaceae
- Saccharibacteria\_(TM7)\_[F-1]
- Atopobiaceae
- Staphylococcaceae
- Burkholderiaceae
- Flavobacteriaceae
- Propionibacteriaceae
- Moraxellaceae
- Sphingomonadaceae
- Microbacteriaceae
- Rhizobiaceae
- Phyllobacteriaceae
- Weeksellaceae
- Abconditabacteria\_(SR1)\_[F-1]
- Hymenobacteraceae
- Saccharibacteria\_(TM7)\_[F-2]
- Mycobacteriaceae
- Comamonadaceae
- Pseudomonadaceae
- Lachnospiraceae
- Porphyromonadaceae
- Yersiniaceae
- Enterobacteriaceae

- F28914.S396
- F28914.S393
- F28914.S394
- F28914.S593
- F28914.S437
- F28914.S398
- F28914.S556
- F28914.S399
- F28914.S400
- F28914.S554
- F28914.S438
- F28914.S559
- F28914.S560
- F28914.S075
- F28914.S277
- F28914.S235
- F28914.S115
- F28914.S113
- F28914.S236
- F28914.S116
- F28914.S079
- F28914.S119
- F28914.S275
- F28914.S076
- F28914.S118
- F28914.S117
- F28914.S273
- F28914.S278
- F28914.S238

Samples

Family